

KIDS FOR YAH

Volume 18, Issue 1
JANUARY 2024

Being a light in the world

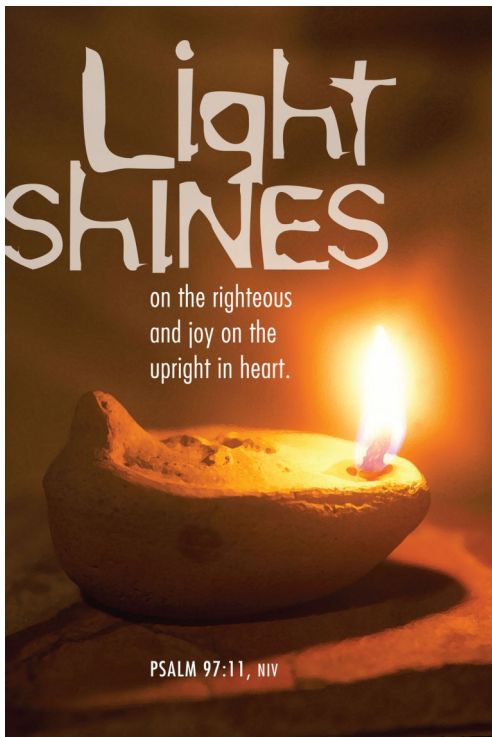
In Matthew 5:14-16, we read, *You are the light of the world. A city that is set on a hill cannot be hidden. Nor do they light a lamp and put it under a basket, but on a lampstand, and it gives light to all who are in the house. Let your light so shine before men, that they may see your good works and glorify your Father in heaven.*

Before electricity, the ancient world depended on candles and lanterns to light their way. Modern people take it for granted when they walk into any room and flip a small switch on the wall and instantly the room becomes illuminated. A small light can bring much comfort in total darkness. Spiritually speaking, the world is a very dark place. Yahshua said we are to be a light in this world of darkness. So, what are some practical ways to become a light to the world? Number one would be to worship Yahweh and put into the practice His instructions found in His Word. Yahweh expects us to be a good example to everyone around us.

Your daily conduct goes a long way in letting your light shine. Being kind to others; practicing politeness; and being helpful can do a lot to build good character. People will notice that you don't behave badly like other children might. You may find that adults will praise and admire you for your good behavior. Your obedience to your parents will be particularly impactful to those who witness it. Honoring your parents even has a special promise from Yahweh. He promises a long life to those who honor their parents. Start now, in building righteous character so that your life will go well!

Inside this issue:

Being a light in the...	1
Do you know?	2
Word search	3
The Valley of dry...	4



Do you know?

1. What is true about a city on a hill according to Matthew 5:14-16?

- A. It cannot be hidden.
- B. It is invisible.
- C. It is always under a heavy fog.
- D. It is blocked by tall redwood trees.

2. What is also true about a lamp?

- A. It should be hidden under a basket.
- B. It should be put on a stand to give light.
- C. It should be put under a lampshade to dim it.
- D. It should be hidden where no one can find it.

3. Which is/are true?

- A. A small light can bring comfort in total darkness.
- B. We must let our lights shine so others will glorify Yahweh.
- C. This world is in spiritual darkness.
- D. All are true.

4. What is the number one way to be a light to the world?

- A. Throw a tantrum when you don't get your way.
- B. Be mean to people so they will be afraid of you.
- C. Become a cruel dictator.
- D. Worship Yahweh and do what He tells us in Scripture.

5. What are some ways to show good character?

- A. Be helpful.
- B. Be polite.
- C. Be good.
- D. All of the above.

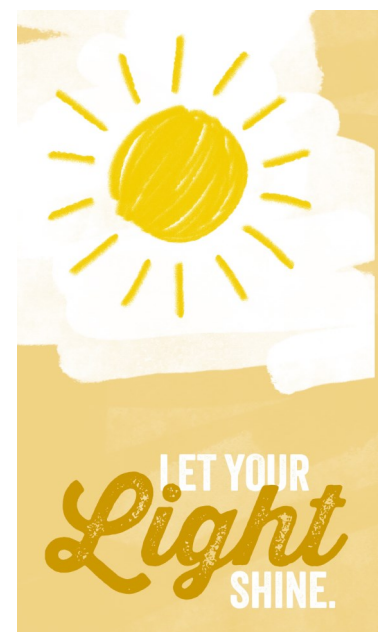
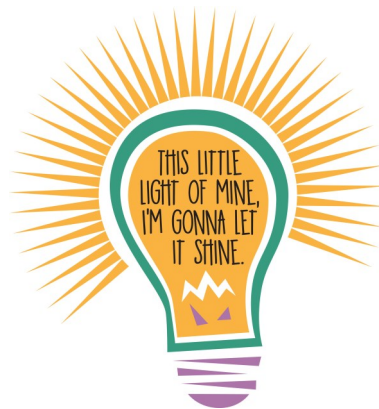
6. What else shows good character?

- A. Being obedient to your parents.
- B. Being mean to your younger siblings.
- C. Playing silly pranks on your friends.
- D. Yelling at your teachers.

7. Which commandment has a special promise of long life from Yahweh?

- A. Eating kosher.
- B. Eating only a plant based diet.
- C. Honoring your parents.
- D. Fasting twice a week.

Celebration of Life



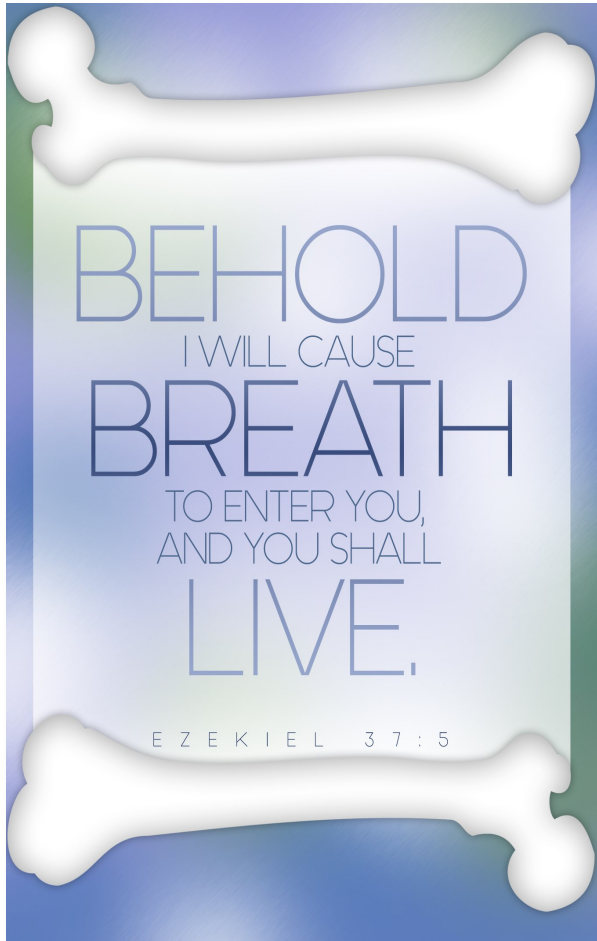
Being a light in the world

POLITE **HELPFUL** KINDNESS **FRIENDLY** INTELLIGENT **MERCIFUL**
 GOODNESS **PATIENT** GENTLE **PEACEFUL**

T	O	F	P	C	P	S	T	E	T	I	P	E	R
L	G	R	E	M	E	R	C	I	F	U	L	N	E
K	P	I	E	T	E	N	G	S	L	N	L	G	G
G	I	E	L	U	F	P	L	E	H	E	T	R	I
E	D	N	S	S	E	N	D	O	O	G	T	L	P
N	L	D	D	F	K	A	E	E	L	G	N	E	F
T	N	L	L	N	T	I	N	F	L	T	A	G	L
L	I	Y	E	L	E	E	N	L	E	U	N	U	U
E	P	A	N	E	H	S	U	T	F	E	G	P	F
N	O	U	P	L	H	U	S	I	S	E	E	T	E
N	L	T	N	E	G	I	L	L	E	T	N	I	C
L	I	T	N	E	I	T	A	P	H	N	S	L	A
A	T	E	L	O	Y	T	E	N	I	L	F	T	E
A	E	O	N	N	E	H	O	A	D	A	E	N	P

Yahweh's Assembly in Yahshua
2963 County Road 233
Kingdom City, Missouri 65262

Main Line: 1-573-642-4100
Toll Free: 1-877-642-4101
Fax Line: 1-573-642-4104
Website: www.KidsForYah.org



The Valley of dry bones

Bones are mentioned many times in Scripture. See if you can find the names of people associated with statements about bones.

1. Who had a vision of dry bones? (Ezekiel 1:3, 37:1-6)
2. Whose bones were afflicted by the devil? (Job 2:3-5)
3. Who defiled Yahweh's altar by burning bones? (2 Kings 23:16)
4. The bones of this man caused a dead man to live again. (2 Kings 13:21)
5. Who stated that the Pharisees were like dead men's bones? (Matthew 23:1, 27)
6. Who was punished because he "broke the bones of Israel"? (Jeremiah 50:17-18)
7. Who commanded that his bones not be left in Egypt? (Genesis 50:24-25; Hebrews 11:22)
8. Name the person who said that the words of Yahweh were as a "burning fire shut up in his bones". (Jeremiah 20:9)
9. Which man and his sons had their bones buried under an oak tree in Jabesh? (1 Chronicles 10:12)
10. Who was accused unjustly, causing the king to throw his accusers in the lions' den where their bones were broken? (Daniel 6:24)
11. Who condemned the cruelty of the princes of Israel because they broke the bones of Yahweh's people? (Micah 3:1-2)